

StoneLite®

NOTE*
INSULATION BOARD
(25 PSI - MIN.)
(BY OTHERS)

SHEATHING (BY OTHERS)

FACTORY ATTACHED
3 1/2" LONG ALUMINUM
WIDE INTERLOCKING
CHANNEL TO EACH
ATTACHMENT PLATE W.
(2) #10 TEK SCREWS
AT EACH PLATE

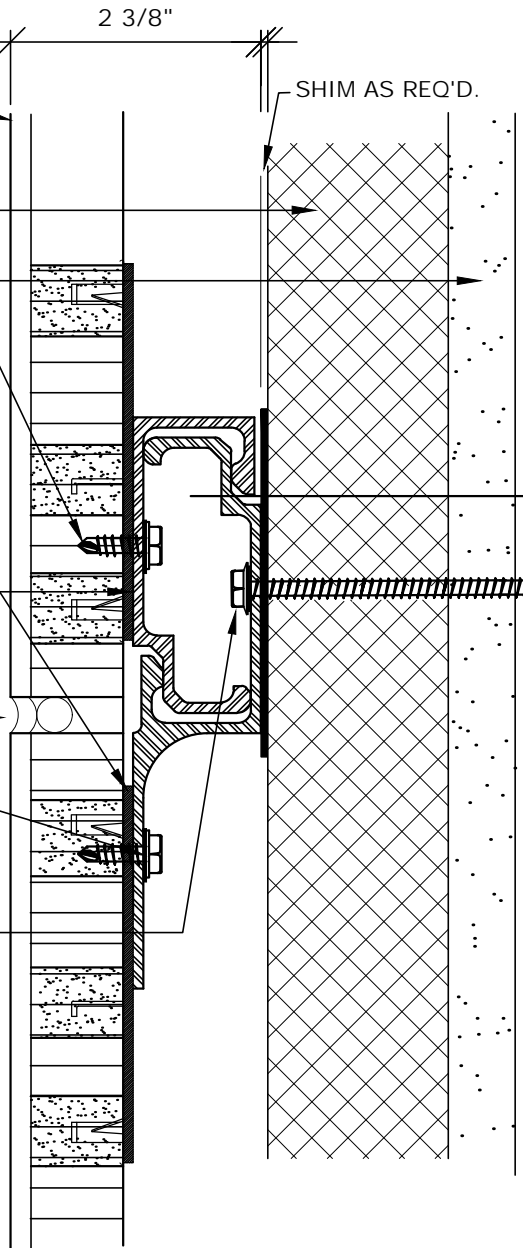
3 1/2" X 3 1/2" X 14GA.
FACTORY ATTACHED -
ATTACHMENT PLATES
AT 24" O.C. MAXIMUM
VERTICAL & HORIZONTAL

SEALANT AND
BACKER ROD
(BY OTHERS - TYP.)

FACTORY ATTACHED
CONT. JOINT CHANNEL

FIELD ATTACH CONT.
JOINT CHANNEL THRU
INSULATION BOARD
AND SHEATHING INTO
EACH FURRING MEMBER
W/ (1) #12 TEK SCREW
AS REQ'D PER SCREW
MANUFACTURER

USE BUILDEX "MAXISEAL"
W/ CLIMASEAL ACR FINISH
& NEOPRENE WASHER OR
APPROVED EQUAL.



SECTION

StoneLite®

NOTE*
INSULATION BOARD
(25 PSI - MIN.)
(BY OTHERS)

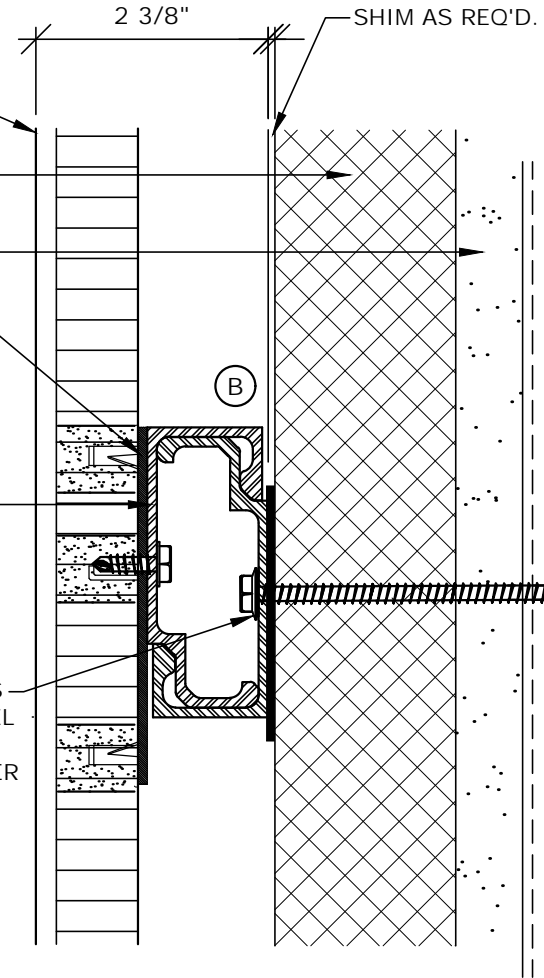
SHEATHING (BY OTHERS)

3 1/2" X 3 1/2" X 14GA.
FACTORY ATTACHED -
ATTACHMENT PLATES
AT 24" O.C. MAXIMUM
VERTICAL & HORIZONTAL

FACTORY ATTACHED
3 1/2" LONG ALUMINUM
WIDE INTERLOCKING
CHANNEL TO EACH
ATTACHMENT PLATE W.
(2) #10 TEK SCREWS
AT EACH PLATE

FIELD ATTACH CONTINUOUS
MATING ALUMINUM CHANNEL
(SUPPLIED BY SPI)
INTO EACH FURRING MEMBER
WITH (1) #12 TEK SCREW
AS REQUIRED PER
SCREW MANUFACTURER

USE BUILDEX "MAXISEAL"
W/ CLIMASEAL ACR FINISH
& NEOPRENE WASHER OR
APPROVED EQUAL.



SECTION

SP-22

Over Insulation Board with no vertical furring

Stonepanels
INTERNATIONAL LLC

2400 HWY 1431 WEST
Marble Falls, TX 78654
800.328.6275
www.stonepanels.com